



Tomorrow RNG
 610 Elm St., Ste. 300
 McKinney, TX 75609
 (432) 813-4184
 Website: www.tomorrowrng.com

ABOUT TOMORROW RNG

Tomorrow RNG (TRNG), located in McKinney, TX operates jurisdictional natural gas transmission pipelines Texas. The Tomorrow RNG pipeline systems are identified as (1) East Texas Renewables at Greenwood Farms Landfill, near Tyler, TX, (2) Edinburg Renewables is located at the City of Edinburg Solid Waste Landfill in Edinburg TX, (3) Pine Hill Renewables is located in Gregg County in Kilgore, TX, (4) Melissa Renewables is located in Collin County, in Melissa, TX.

WHAT DOES TOMORROW RNG DO IF A LEAK OCCURS?

To prepare for the event of a leak, pipeline companies regularly communicate, plan and train with local emergency providers. Upon the notification of an incident or leak, Tomorrow RNG will immediately dispatch trained personnel to assist emergency responders.

The pipeline operator and emergency responders are trained to protect life, property and facilities in case of an emergency.

Tomorrow RNG will also take steps to minimize the amount of product that leaks out and to isolate the pipeline emergency.

MAINTAINING SAFETY AND INTEGRITY OF PIPELINES

Tomorrow RNG invests significant time and capital maintaining the quality and integrity of their pipeline systems.

Operator personnel continually monitor the pipeline system and assess changes in pressure and flow. We notify field personnel if there is a possibility of a leak.

Specific information about our emergency response program and operations may be obtained by contacting us directly.

PRODUCTS TRANSPORTED

Product: Natural Gas

Leak Type: Gas

Vapors:

Lighter than air and will generally rise and dissipate. May gather in a confined space and travel to a source of ignition.

Product Hazards:

Will be easily ignited by heat, sparks or flames and will form explosive mixtures with air. Vapors may cause dizziness or asphyxiation without warning and may be toxic if inhaled at high concentrations. Contact with gas or liquefied gas may cause burns, severe injury and/or frostbite.

EMERGENCY CONTACT:

Hidalgo - Edinburg Renewables
 1-800-723-9640

Smith - East Texas Renewables
 1-800-723-9640

Gregg - Pine Hill Renewables
 1-800-723-9640

Collin - Melissa Renewables
 1-800-723-9640

PRODUCTS/DOT GUIDEBOOK ID#/GUIDE#:		
Natural Gas	1971	115

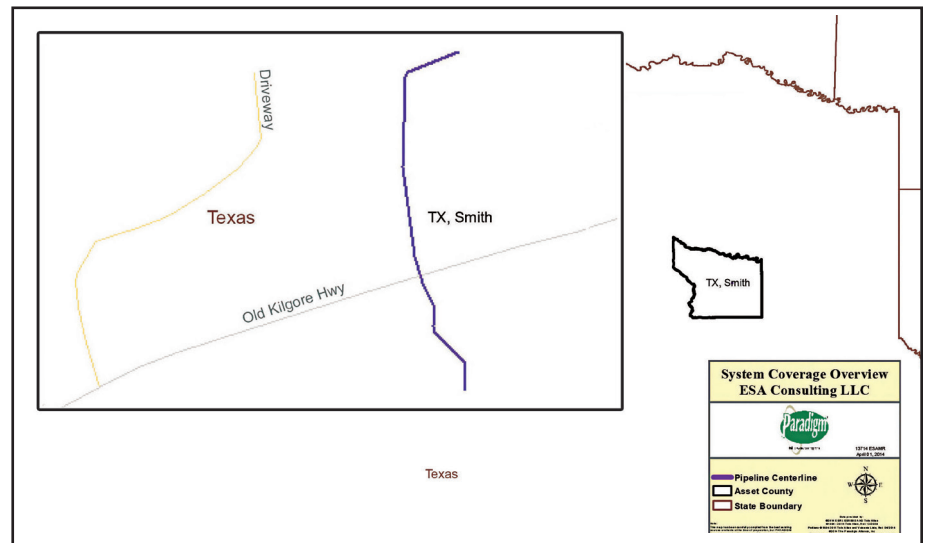
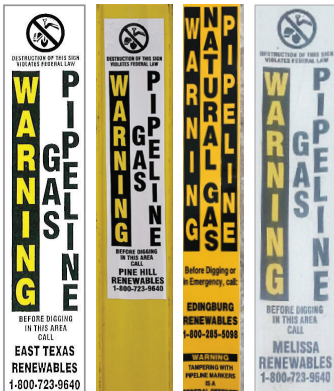
**TEXAS
 COUNTIES OF OPERATION:**

Collin	Hidalgo
Gregg	Smith

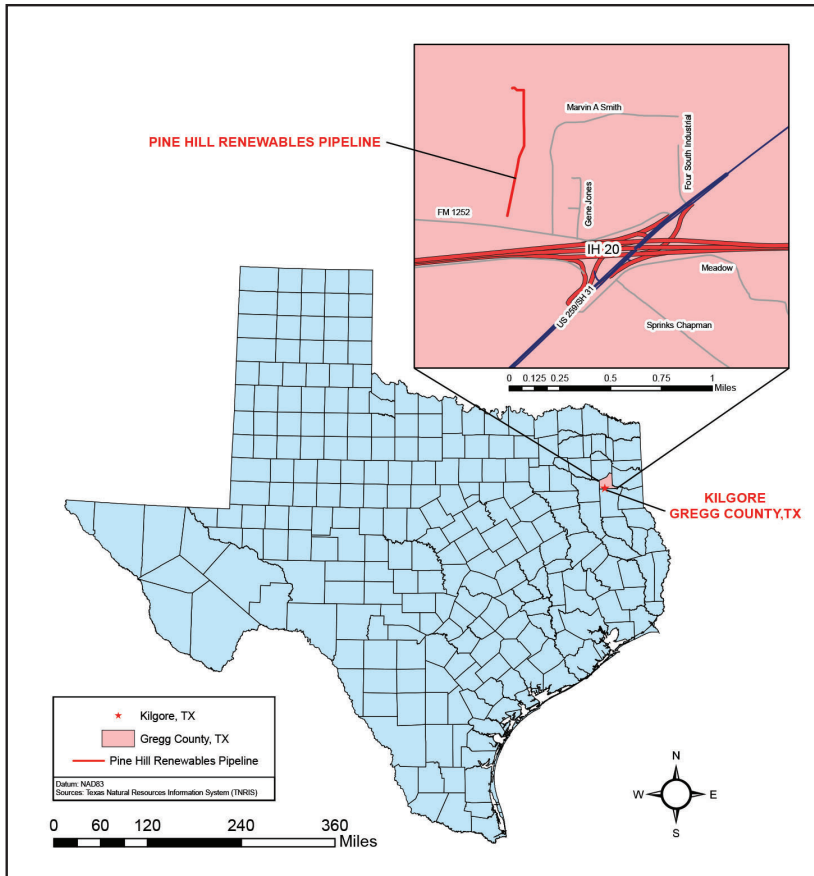
Changes may occur. Contact the operator to discuss their pipeline systems and areas of operation.

HOW TO GET ADDITIONAL INFORMATION

For additional information contact us at (432) 813-4184
 www.tomorrowrng.com



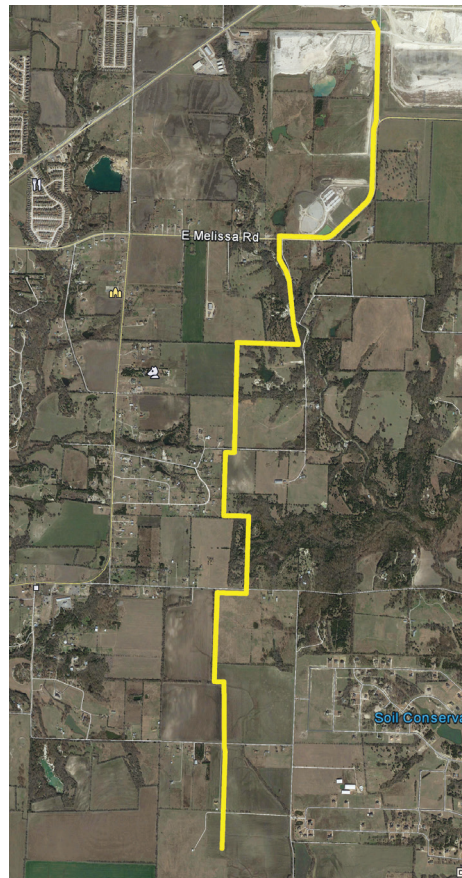
East Texas Renewables System Map



Pine Hill Renewables System Map



Edinburg Renewables System Map



Melissa Renewables System Map